

## Westmill Sustainable Trust (WeSET)

**Annual Report to Westmill Wind and Westmill Solar members for year ended 31 December 2018**  
**Registered charity 1132379 and charitable incorporated organisation 1158820**

www.weset.org

Facebook group: Westmill Sustainable Energy Trust

*Every energy scheme should have one*

### Public tours

You can join a tour of the wind and solar park by booking here [http://www.weset.org/?page\\_id=561](http://www.weset.org/?page_id=561). Also there you will also find a request form for a separate visit for a large party such as a school group.

### Financial review

Our income in 2018 (see Table 1) was 80% of that in 2017 due to higher donations from Westmill Solar Co-operative in payments associated with three of their previous trading years being received in 2017.

Our expenditure in 2018 (see Table 1) was almost double that in 2017. We made donations of £10,000 to Renewable World, a UK charity which alleviates poverty in the developing world through the installation of community-owned renewable energy systems. We have also spent a similar sum on progressing enhanced visitor facilities at the site listed under operating expenses.

WeSET depends on donations to carry out our activities and we gratefully acknowledge the funding we have received from Westmill Wind Farm Coop, Westmill Solar Coop, organisations and individuals who have visited the site, and those wonderful Westmill Wind Farm Coop members who kindly donate their dividends to us.

Thanks also go to the Science Museum for the loan of the onsite container building, and for Power Oasis for maintaining the solar PV panels system they provided in 2016.

**Table 1. Statement of Financial Activities for Westmill Sustainable Trust R/C 1132379 and 1158820 as at 31 December 2018 (nine years 2 months after entry into the Register of Charities)**

	2018	2017	2016
<b>Opening cash balance</b>	<b>£40,237</b>	<b>£8,646</b>	
<b>Income</b>			
Fund Raising Events			£800
FIT payments	£1,186		
Gifts and Donations Income	£28,390	£55,542	£28,621
Gifts and Donations Income (restricted funds)	£26,447	£16,347	
Gift Aid claims		£389	
Grants	£985	£50	£948
<b>Total income</b>	<b>£57,008</b>	<b>£72,328</b>	<b>£30,369</b>
<b>Expenditure</b>			
Awards & Grants	£8,050	£5,350	£16,646
Events	£7,070	£8,513	
FIT donation to Watchfield PC		£602	
Float	£1,000		£1,000
International aid	£10,000		
Officers Remuneration	£24,518	£17,862	£8,839
Officers Remuneration (restricted funds)	£5,789	£222	
Other Operating Expenses	£21,494	£8,177	£4,661
Other Operating Expenses (restricted funds)	£663	£12	

Visit Equipment & Expenses	£1,136	£8,513	£1,967
<b>Total Expenditure</b>	<b>£79,720</b>	<b>£40,503</b>	<b>£33,113</b>
<b>Closing cash balance</b>	£17,525	£40,237	£8,646

## June 2018 Events

### 1. 10 Years of Wind Over Westmill, Sat 16 June 2018



The day started with the presentation of shares in Westmill Wind Farm by the Chair of Westmill Wind Coop, Eoin Lees, to the local schools who had named the turbines 10 years earlier. Shrevenham Church of England Primary presented an excellent poem they had written to celebrate the 10 years the turbines had been generating.

White Horse Hill Kite Fliers flew giant kits over the site all afternoon in an amazing display of skilful aerobatics with one made especially by Neil Harvey.

Fashion designer Kuniko Tani exhibited some of her amazing recycled dresses including one made of old solar panel parts, live music was from the bands Paige and the Red Shift and Scarecrow as well as the morris dancers Armaleggan, who delighted visitors with their unusual appearance.

Many thanks to all those stall holders and volunteers who helped make the day a truly memorable one and the Oxford Bus Company for providing a free double decker to bring visitors from Oxford.

<https://www.westmill.coop/10th-anniversary-event/>

### 2. Father's Day Service, Sun 17 June 2018

Celebration continued with a Father's Day Service led by Rev Richard Hancock of Shrevenham; including Open the Book who presented biblical dramas to bring the stories alive. The congregation was called to the service by campanologists using their mobile belfry which people were encouraged to have a go on afterwards. The service was followed by picnics and later by fun and games for the more energetic as well as further opportunities for the ever popular site tours.

## School Energy Resource Packs

We continued work on these packs designed for teacher to be able to pick up and use with confidence in lessons. We completed a review on **Educational materials for schools** on solar and wind energy. If you would like a copy or if you are involved with key stage 2 to 5 education please get in contact with Mim ([visit@weset.org](mailto:visit@weset.org)).

## People's Power Station live website enhancement

Funding from Westmill Solar has helped enable live generation figure to display at <https://peoplespowerstation.org>. If you generate energy from renewables please add it there.

## Supporting energy efficiency in community buildings across Oxfordshire:

TOE2 funding for building audits has stopped so we have provided funding to Low Carbon Hub fund to offer a number of free or subsidised audits.

## And also

- Westmill visits: 35 booked visits, plus 5 public visit days and an open day, 655 booked visitors and approx 1000 open day visitors
- Off site visits: 6 activity sessions, plus Coleshill Earth Summit (4 days in May) running 16 workshops for primary schools in the Swindon borough
- As part of Green Lantern, met with the local MP Ed Vaizey to raise the case for renewables and community energy.
- Kept the website fresh thanks to webmaster Chris Wilson and a redesign lead by Paul Beattie.

## People matter

Mim Norvell (pictured right and at [visit@weset.org](mailto:visit@weset.org)) has joined us as our Visits and Volunteers Coordinator taking over from Sarah James who I delighted to say has become a Trustee.

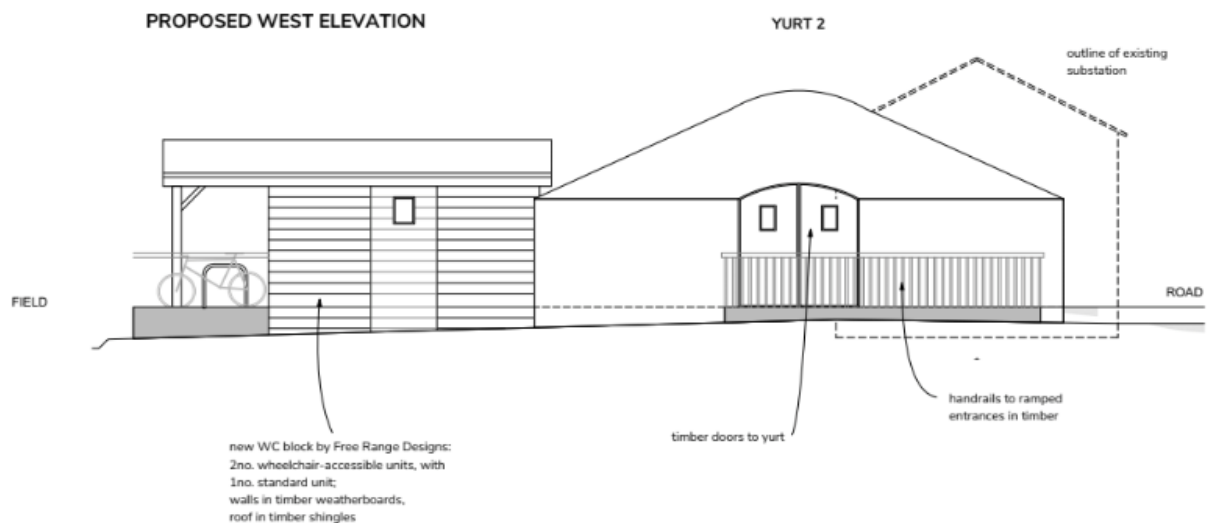


## We want to give

We are happy to share our documents as examples of what is needed to become a CIO.

## Westmill Centre – improving the visitor experience

We obtained planning permission for a Westmill Centre building to help improve visitor experience. One condition was for the improvement to the site entrance and provision of a bike shelter. These requirements meant the total budget was beyond what we could afford so we have submitted a new application for similar functional space and facilities through a disabled access toilet block and yurts. We have also made a revised application to Leader to help fund this.



## Memberships

We are a Class B Shareholder in Low Carbon Hub CIC ([www.lowcarbonhub.org](http://www.lowcarbonhub.org)). We were one of the forming sponsors of Community Energy England ([www.communityenergyengland.org](http://www.communityenergyengland.org)). This exists to promote and assist greater focus in assisting the birth of many more such projects. We are members of the Community Action Group (<http://www.cagoxfordshire.org.uk>). The CAG network has over 50 groups across Oxfordshire at the forefront of community led climate change action

## You

If what you have read interests you in anyway, please get in touch and get involved. We welcome views on how we can best to promote the sustainable use of energy. For further information please contact: Mike Blanch, 8 Maple Gardens, Milton, Abingdon, [michaelblanch@btinternet.com](mailto:michaelblanch@btinternet.com)



Mike Blanch, WeSET Chair and Treasurer, 13 April 2019